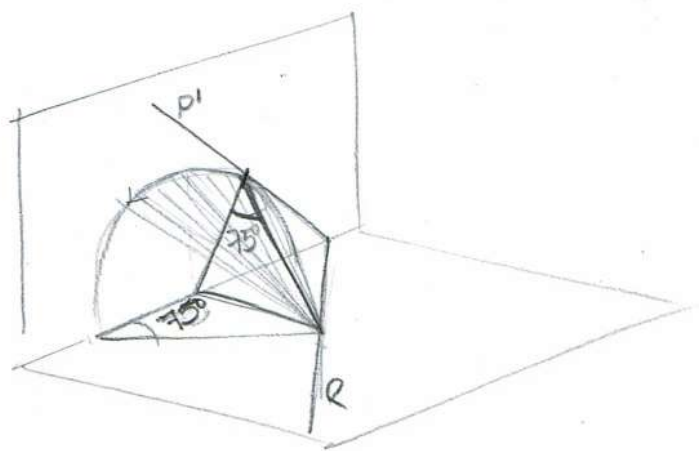
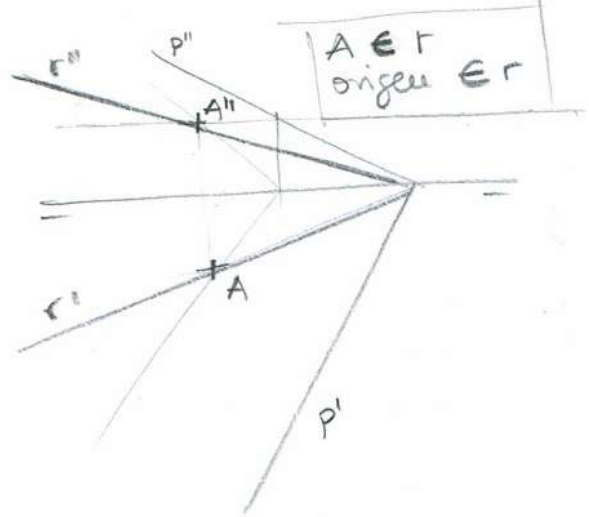


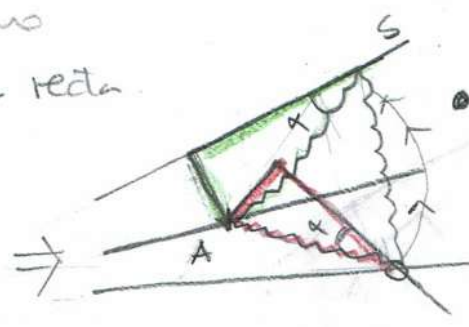
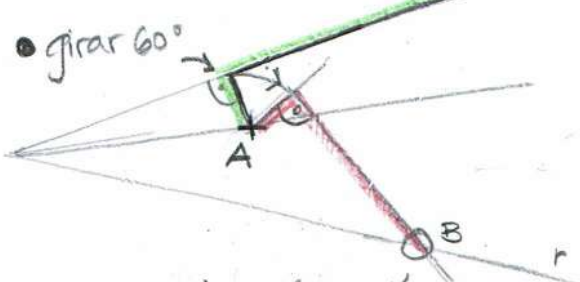
1) Hallar traza  $P'$   
 ( $P \rightarrow PV \ 75^\circ$ )



2) Pto en  $P$  que equidista  
 a  $FH$  y  $PV$ .  
 Debe estar en  $r$ ,  
 siendo  $r: P \cap 10^\circ \text{bis.} \rightarrow r$

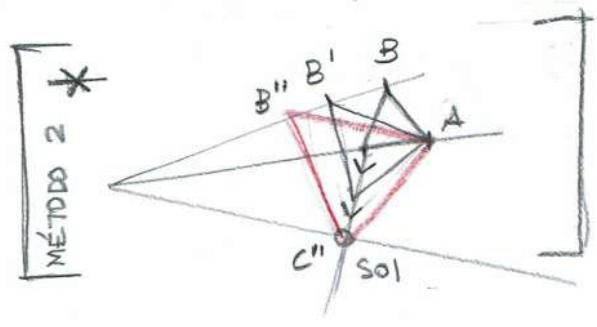


3) Giro, triángulo equilátero  
 con tres vértices en cada recta.

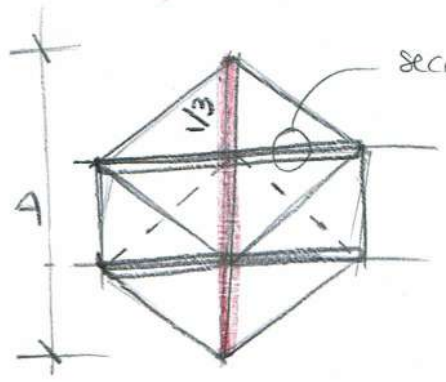


• es la sol.  
 que en  $s$   
 tiene el mismo  
 ángulo  $\alpha$  con  
 la recta

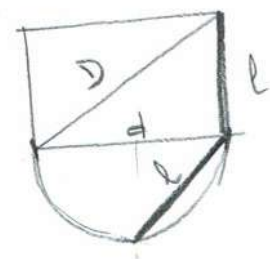
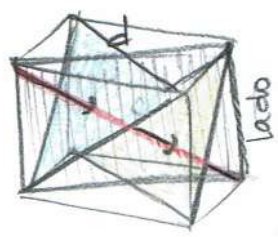
• solución  
 en la que corta la recta  $r$



4) Hexaedro



sección  $\triangle$



$d = 8 \text{ un.}$